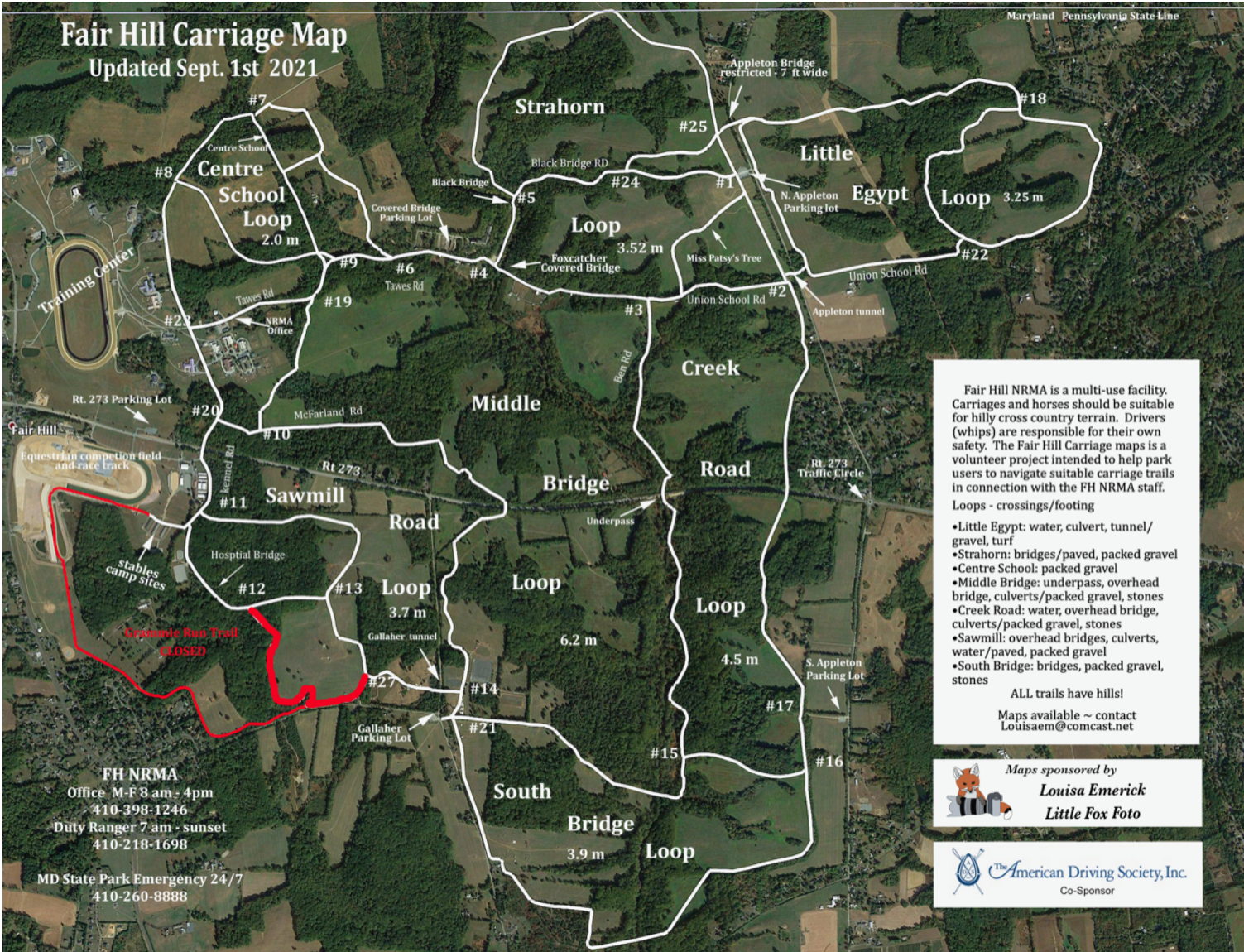


Fair Hill Carriage Map

Updated Sept. 1st 2021



Fair Hill NRMA is a multi-use facility. Carriages and horses should be suitable for hilly cross country terrain. Drivers (whips) are responsible for their own safety. The Fair Hill Carriage maps is a volunteer project intended to help park users to navigate suitable carriage trails in connection with the FH NRMA staff.

Loops - crossings/footing

- Little Egypt: water, culvert, tunnel/ gravel, turf
- Strahorn: bridges/paved, packed gravel
- Centre School: packed gravel
- Middle Bridge: underpass, overhead bridge, culverts/packed gravel, stones
- Creek Road: water, overhead bridge, culverts/packed gravel, stones
- Sawmill: overhead bridges, culverts, water/paved, packed gravel
- South Bridge: bridges, packed gravel, stones

ALL trails have hills!

Maps available ~ contact
Louisaem@comcast.net

Maps sponsored by
 **Louisa Emerick**
Little Fox Foto

 **The American Driving Society, Inc.**
Co-Sponsor

FH NRMA
Office M-F 8 am - 4pm
410-398-1246
Duty Ranger 7 am - sunset
410-218-1698
MD State Park Emergency 24/7
410-260-8888